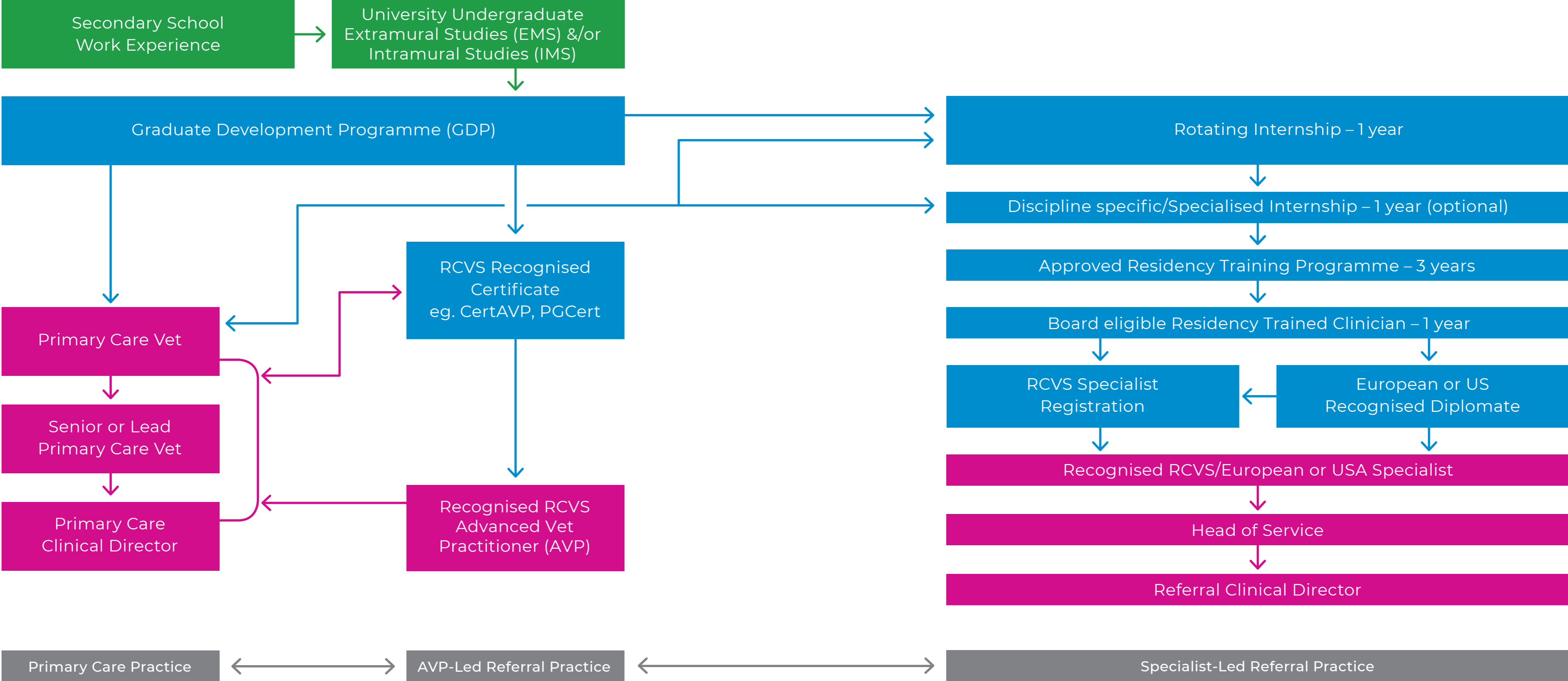


# POSSIBLE VETERINARY ASSOCIATE CAREER PATHWAYS PRACTICE ROLES

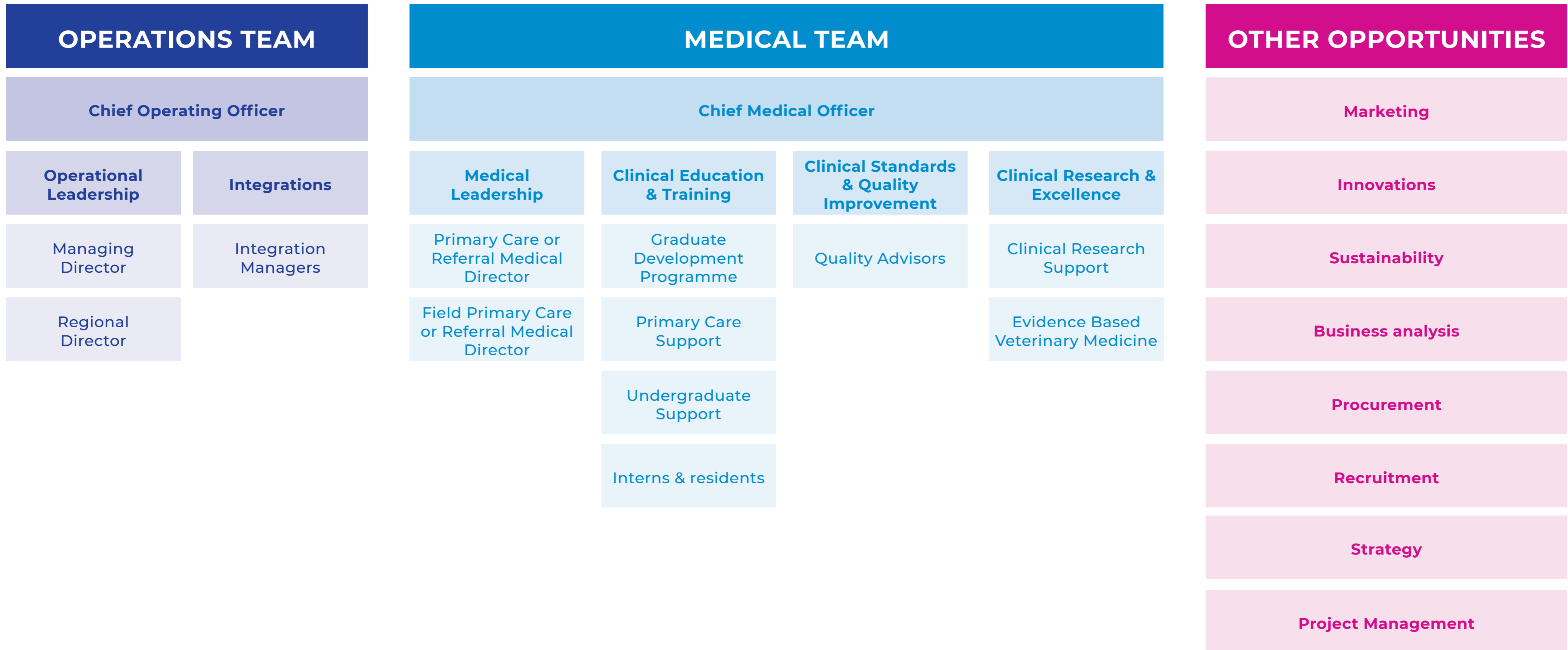
Throughout there are opportunities for engagement and leadership in:



Further education, training & professional development is available to all veterinary Associates within Linnaeus no matter their role or career goal. We support all to be the best vets they can be! **Roles boxed in pink** reflect potential long term roles for a veterinary Associates within Linnaeus. All of our Associates are supported by resources from the Linnaeus Central Support team and the wider Mars Veterinary Health team.

# POSSIBLE VETERINARY ASSOCIATE CAREER PATHWAYS

## CENTRAL SUPPORT ROLES



Opportunities within the Linnaeus Central Support team for Veterinary Associates exist in the Medical and Operations Teams as well as in other functions such as Marketing, Sustainability, Procurement etc.

Further opportunities exist within the wider Mars Inc. family, particularly within Mars Veterinary Health which has roles in education/training, quality, research, IT etc.